

## 2.4 mm Diameter Articulating Scope for Very Narrow Spaces



# IPLEX TX

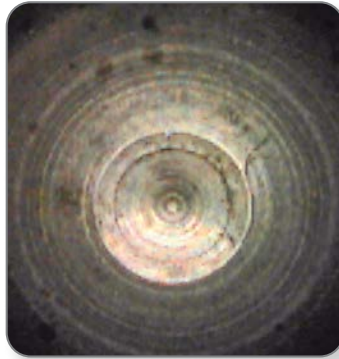
## An articulating 2.4 mm diameter videoscope with excellent image quality and durability

The IPLEX™ TX videoscope enables you to make inspections inside parts where access is limited due to very narrow openings. With clear images and outstanding durability, the IPLEX TX is the ideal videoscope for routine inspections of castings, molds, and other parts with small cavities.

Ultra-thin



Excellent image quality



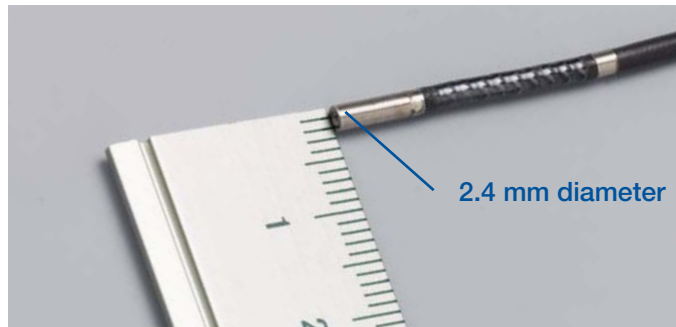
Durable



## Ultra-thin diameter videoscope with articulation

### Ultra-thin, 2.4 mm diameter

At just 2.4 mm in diameter, the flexible insertion tube reaches inside almost any narrow or difficult-to-reach area that requires reliable visual inspection for defects.



### Quick and accurate articulation

The IPLEX TX videoscope is equipped with an ergonomic, user-friendly scope articulation controller. The controller features excellent responsiveness and quickly and accurately navigates the scope tip inside narrow and intricate objects.



## Rugged design optimal for frequent use

### Unsurpassed abrasion resistance

The IPLEX TX insertion tube is protected with a special resin tube that offers 200 times greater abrasion resistance than our conventional extra-thin fiberscopes. The durable insertion tube enables reliable inspections of casting and other metals that have rough surfaces.

### Dust and drip proof

Designed to meet IP55 standards, the IPLEX TX videoscope is dust and drip proof, helping maximize uptime in harsh manufacturing environments.



## Interchangeable scope system

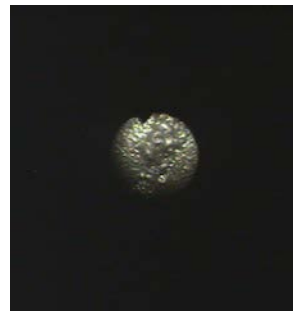
The IPLEX TX has an insertion tube that can be easily interchanged in the field.



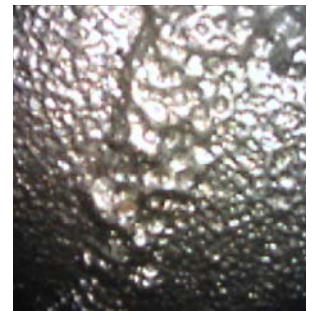
## Advanced image quality

### Bright and clear images

Compared to conventional very-small-diameter fiberscopes, the IPLEX TX delivers superior image quality. The videoscope's vivid and clear images help inspectors detect abnormalities for more efficient inspections.



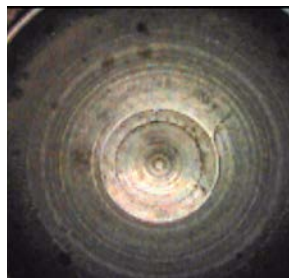
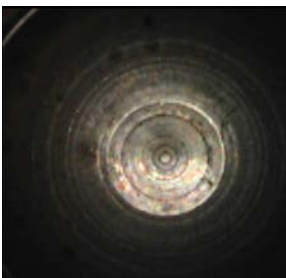
Monitor image via a conventional fiberscope



Monitor image on the IPLEX TX

## Precise image reproduction without halation

WiDER™ image processing limits the halation that often occurs when inspecting shiny metal objects. It brings out the details in shadow areas, producing clearer, crisper images.



## Large monitor, small body

The IPLEX TX is equipped with a 6.5 in. LCD monitor to clearly display tiny defects such as burrs and scratches.

The compact and portable body with an integrated lithium-ion battery allows you to make inspections almost anywhere.



## Efficient image management

### High-quality images and movies

Observed images can be recorded onto a removable USB flash drive as high-quality JPEG still images and MPEG-4 movies. The provided 1 GB USB flash drive can store approximately 3,400 still images or a 30-minute movie.



### Title input function

For efficient image diagnosis and report generation, the IPLEX TX enables you to insert titles as well as date and time overlay.



# IPLEX™ TX Specifications

## SCOPE UNIT

<b>Model No.</b>		IV8212T
<b>Approximate weight</b>		0.2 kg (0.44 lb)
<b>Insertion tube</b>	<b>Scope diameter<sup>1</sup></b>	ø2.4 mm (0.09 in.)
	<b>Scope length</b>	1.2 m (3.9 ft)
	<b>Distal end<sup>2</sup></b>	9.8 mm (0.4 in.)
	<b>Exterior</b>	High-durability resin tube with special processing
	<b>Tube flexibility</b>	Uniform stiffness
<b>Optics</b>	<b>Direction of view</b>	Forward
	<b>Field of view</b>	80°
	<b>Depth of field<sup>3</sup></b>	3 to 70 mm (0.12 in. to 2.75 in.)
	<b>Illumination</b>	High-intensity white LED
<b>Articulation section</b>	<b>Articulation angle</b>	135° (Up/Down)
	<b>Articulation mechanics</b>	Direct manipulation

\*1. The insertion tube can be inserted into a 2.4 mm (0.09 in.) hole.  
 \*2. Indicates the length of the rigid portion at the scope's distal end.  
 \*3. Indicates the optimal focal distance.

## MAIN UNIT

<b>Model No.</b>		IV8200T	
<b>Approximate weight</b>		1.7 kg (3.7 lb) (with battery or AC power adaptor)	
<b>Dimensions (W x D x H)</b>		227 mm x 64 mm x 189 mm (8.96 in. x 2.5 in. x 7.4 in.); Max. dimensions: 239 mm x 99 mm x 215 mm (9.4 in. x 3.9 in. x 8.5 in.)	
<b>Handheld controller</b>	<b>Controllable functions</b>	Live mode, WiDER™ Gain control, Brightness, Zoom, Freeze image, Record still/video, Articulation control, Articulation lock, Menu access, Saved recording index access, Quick last image recall.	
	<b>Approximate weight</b>	0.3 kg (0.66 lb)	
	<b>Dimensions (W x D x L)</b>	49 x 59 x 334 mm (1.9 in. x 2.3 in. x 13.1 in.)	
<b>LCD monitor</b>		6.5 in. daylight-view LCD, anti-reflective type	
<b>Power supply</b>		Battery: 10.8 V nominal AC power: 100 V to 240 V, 50/60 Hz (with supplied AC adaptor)	
<b>Output connector</b>		RCA composite video output	
<b>USB connector</b>		Type A connector, Version 2.0 standards	
<b>Software manipulations</b>	<b>Image manipulations</b>	Seamless digital zoom from 0.5x to 2x, 8-step digital brightness control	
	<b>Adjustable gain control</b>	3-step adjustable gain control with exclusive WiDER™ brightness level balancing technology	
	<b>Display text options</b>	30-character title display	
<b>Recording management functions</b>	<b>Recording media</b>	USB flash memory (1 GB standard, compatible with recommended USB flash device)	
	<b>Overlay</b>	Selectable 30-character title with date, time and system setting	
	<b>Thumbnail image display</b>	Recorded images can be displayed as thumbnails	
	<b>Still image recording</b>		Resolution – NTSC: H640 x V480 (Pixel), PAL: H768 x V576 (Pixel)
			Recording format – Compressed JPEG format Size of a single image – Approximately 300 KB (approximately 3,400 images per 1 GB memory)
	<b>Video recording</b>		Resolution – H640 x V480 (Pixel) Recording format – AVI MPEG-4 format. Can be played on the Windows Media Player. Size of a single image – Approximately 500 KB per second (approximately 30 min. per 1 GB memory)

## OPERATING ENVIRONMENT

<b>Operating temperature</b>	<b>Insertion tube</b>	In air: -25 °C to 80 °C (-13 to 176 °F) In water: 10 °C to 30 °C (50 to 86 °F)
	<b>Other parts</b>	In air: -10 °C to 40 °C (14 to 104 °F) (with battery) 0 to 40 °C (32 to 104 °F) (with AC power adaptor)
<b>Relative humidity</b>	<b>All parts</b>	15% to 90%
<b>Liquid resistance</b>	<b>All parts</b>	Operable when exposed to machine oil, light oil, or 5% saline solution.
<b>Waterproofing</b>	<b>Insertion tube</b>	Water pressure resistance: Up to equivalent of 1.2 m (3.9 ft) depth.
	<b>Other parts</b>	Operable in blowing rain conditions (battery compartment must be closed). Not operable under water.

## Accessories

### Lithium-Ion Battery NC2040NO29

**Battery Charger CH5000C** (USA type)  
**CH5000X** (European type) The battery provides 150 minutes of operating time.



### LCD Protection Sheet

Protects the IPLEX TX monitor from scratches and dirt.



### Shoulder Belt

Enables you to operate the IPLEX TX while worn.



### Protective Braid

Covers the IPLEX TX insertion tube, providing additional protection when used in very coarse environments.



- EVIDENT CORPORATION is ISO14001 certified.
- EVIDENT CORPORATION is ISO9001 certified

- This product is designed for use in industrial environments for the EMC performance. Using it in a residential environment may affect other equipment in the environment.
- All company and product names are registered trademarks and/or trademarks of their respective owners.
- Images on the PC monitors are simulated.
- Specifications and appearances are subject to change without any notice or obligation on the part of the manufacturer.

EvidentScientific.com

**EVIDENT**

**EVIDENT CORPORATION**  
 Shinjuku Monolith, 2-3-1 Nishi-Shinjuku, Shinjuku-ku, Tokyo 163-0910, Japan

**OLYMPUS**